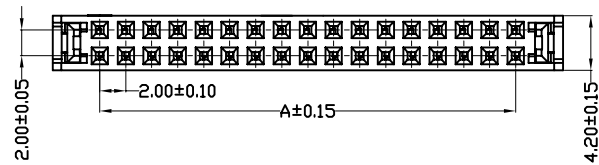
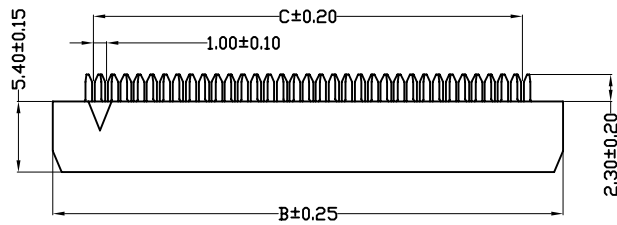
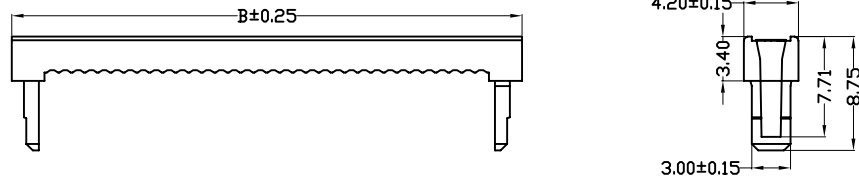
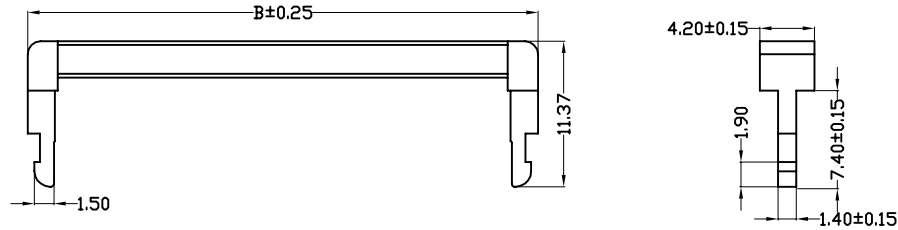


环保物料

■ Specifications(规格) :

- Voltage rating(额定电压): 250V AC / DC
- Current rating(额定电流): 1A AC / DC
- Withstanding voltage(耐压值): 500V AC/minute
- Temperature range(工作温度): -25°C~+85°C
- Insulation resistance(绝缘电阻): ≥1000MΩ
- Contact resistance(接触电阻): ≤20mΩ
- After environmental testing(环境测试后): ≤30mΩ



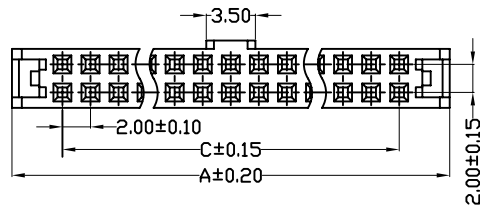
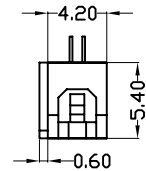
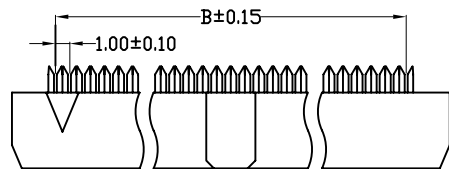
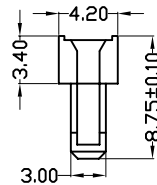
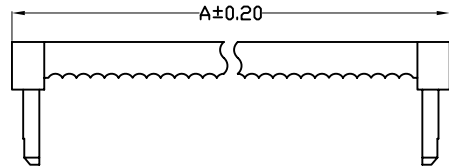
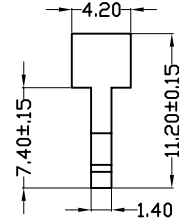
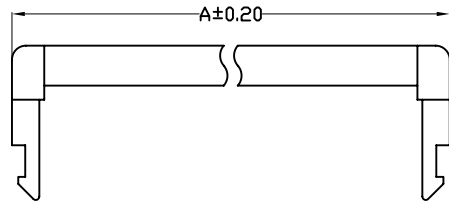
Pos.	Dim. A	Dim. B	Dim. C
6	4.00	11.2	5.00
8	6.00	13.2	7.00
10	8.00	15.2	9.00
12	10.0	17.2	11.0
14	12.0	19.2	13.0
16	14.0	21.2	15.0
18	16.0	23.2	17.0
20	18.0	25.2	19.0
22	20.0	27.2	21.0
24	22.0	29.2	23.0
26	24.0	31.2	25.0
28	26.0	33.2	27.0
30	28.0	35.2	29.0
34	32.0	39.2	33.0
36	34.0	41.2	35.0
40	38.0	45.2	39.0
44	42.0	49.2	43.0
50	48.0	55.2	49.0
56	54.0	61.2	55.0

				一般公差 GENERAL TOLERANCE				东莞市翰皓精密电子有限公司 Dongguan HanHao Precision Electronics Co.,Ltd				料号 PART NO A2017WA-2*XX			
				.X ±0.3 .XX ±0.2 .XXX ±0.1				核准 APPD 审核 CHK 绘图 DR 日期 DATA				品名 TITLE 2.00 mm Crimp Style connectors			
2011/05/14	A	B	修改图框格式				SUCCESS				刘艳				
日期 DATE	旧版次 OLD REV	新版次 NEW REV	变更内容 DESCRIPTION				审核 CHK				核准 APPD				
				角法 PROJECT								单位 UNIT 比例 SCALE 图号 NUMBER 版次 REV MM 1/1 A-069 B			

环保物料

■ Specifications(规格) :

- Voltage rating(额定电压): 250V AC / DC
- Current rating(额定电流): 1A AC / DC
- Withstanding voltage(耐压值): 500V AC/minute
- Temperature range(工作温度): -25°C~+85°C
- Insulation resistance(绝缘电阻): $\geq 1000M\Omega$
- Contact resistance(接触电阻): $\leq 20m\Omega$
- After environmental testing(环境测试后): $\leq 30m\Omega$



Pos.	Dim. A	Dim. B	Dim. C
6	11.20	5.00	4.00
8	13.20	7.00	6.00
10	15.20	9.00	8.00
12	17.20	11.00	10.00
14	19.20	13.00	12.00
16	21.20	15.00	14.00
18	23.20	17.00	16.00
20	25.20	19.00	18.00
22	27.20	21.00	20.00
24	29.20	23.00	22.00
26	31.20	25.00	24.00
28	33.20	27.00	26.00
30	35.20	29.00	28.00
32	37.20	31.00	30.00
34	39.20	33.00	32.00
36	41.20	35.00	34.00
38	43.20	37.00	36.00
40	45.20	39.00	38.00
44	49.20	43.00	42.00
48	53.20	47.00	46.00
50	55.20	49.00	48.00
54	59.20	53.00	52.00
56	61.20	55.00	54.00
60	65.20	59.00	58.00
62	67.20	61.00	60.00
64	69.20	63.00	62.00
68	73.20	67.00	66.00
80	85.20	79.00	78.00

				一般公差 GENERAL TOLERANCE				东莞市翰皓精密电子有限公司 Dongguan HanHao Precision Electronics Co.,Ltd				料号 PART NO A2017WB-2*XX			
				.X ±0.3 .XX ±0.2 .XXX ±0.1				核准 APPD 审核 CHK 绘图 DR 日期 DATA				品名 TITLE 2.00 mm Crimp Style connectors			
2011/05/14	A	B	修改图框格式				SUCCESS 刘艳 2007/05/03				单位 UNIT 比例 SCALE 图号 NUMBER 版次 REV MM 1/1 A-069 B				
日期 DATE	旧版次 OLD REV	新版次 NEW REV	变更内容 DESCRIPTION				审核 CHK 核准 APPD				角法 PROJECT				